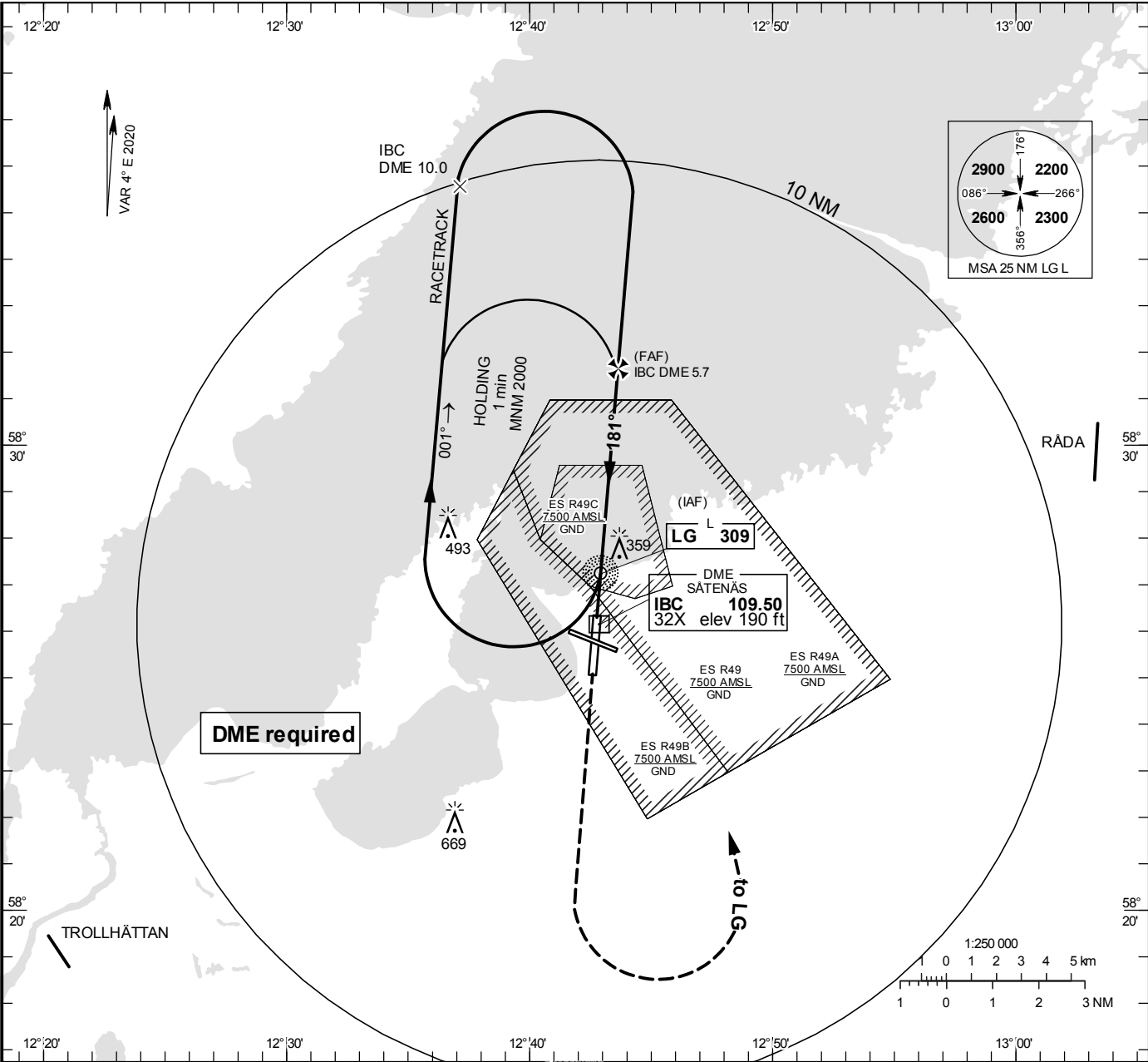


SÅTENÅS
NDB RWY19

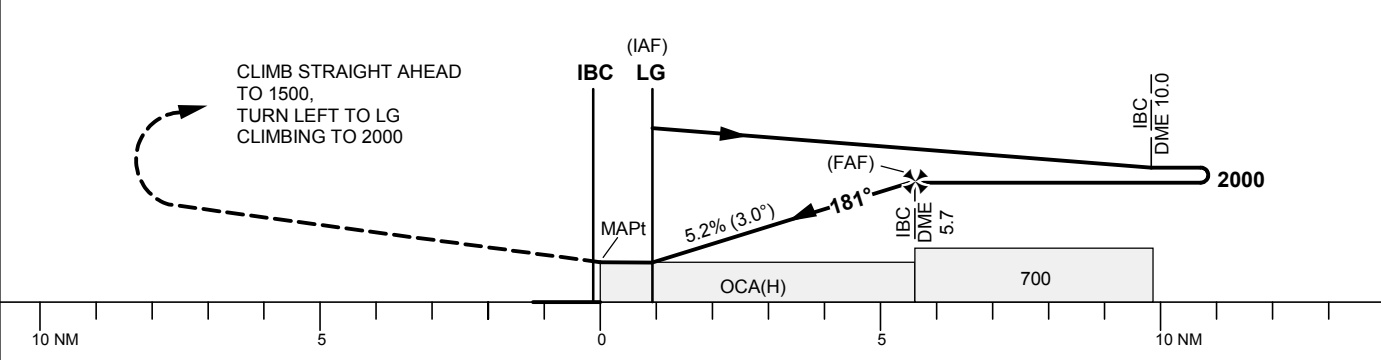
SÅTENÅS TOWER	128.200
SÅTENÅS APPROACH	134.550

THR ELEV 175.3 ft, AD ELEV 181 ft
OCH are related to THR.
Circling OCH are related to AD ELEV.
BRG are MAG
ALT, HGT and ELEV in ft.

INSTRUMENT
APPROACH
CHART – ICAO



TA 5000 ft AMSL



OCA (H)					Final approach	Distance FAF-MAPT 5.6 NM							
Cat of ACFT	A	B	C	D	DME IBC NM	2		3		4		5	
Straight-in Approach	610 (440)				ALT	810		1130		1450		1770	
					GS	kt	80	100	120	140	160	180	
Circling	660 (480)	660 (480)	890 (710)	1070 (890)	Time	min:s	4:11	3:21	2:47	2:23	2:05	1:52	
					Rate of descent	ft/min	425	530	635	745	850	955	

CHANGE: Editorial